

# NOTIFICATION OF PLANNED BURNS NEXT 24 HOURS

FOREST FIRE  
MANAGEMENT VICTORIA

## LODDON MALLEE REGION- MURRAY GOLDFIELDS

**Start Date:** Monday 5<sup>th</sup> of May 2025

**End Date:** Wednesday 7<sup>th</sup> of May 2025

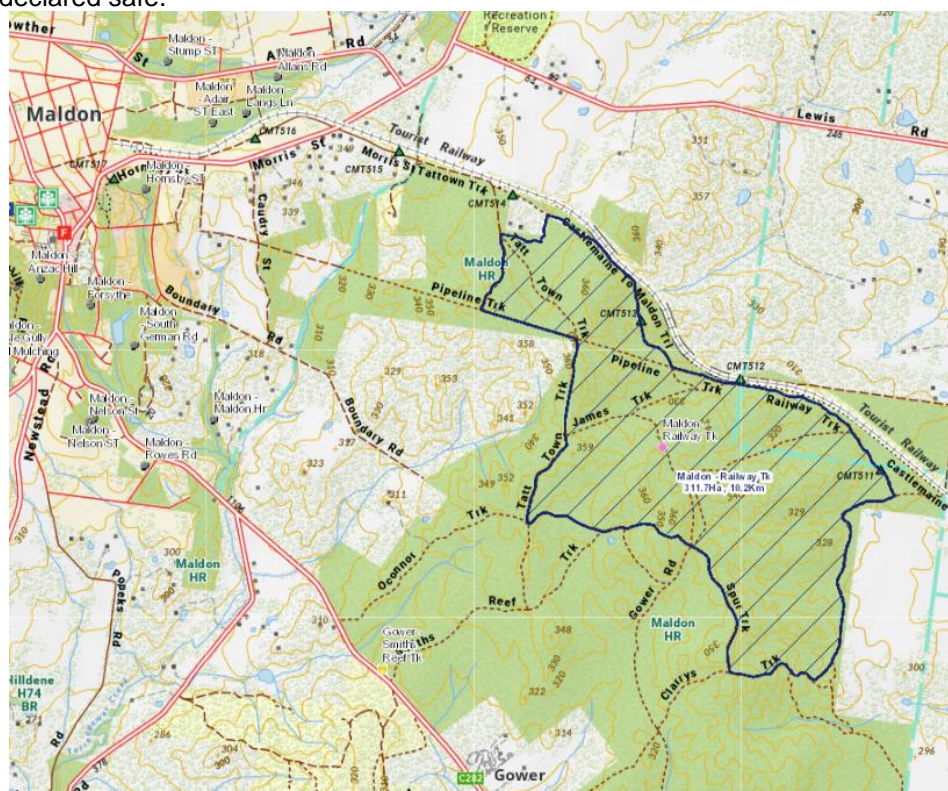
Forest Fire Management Victoria and CFA advise that the following planned burning will be carried out between Monday 5<sup>th</sup> and Wednesday 7<sup>th</sup> of May 2025, weather conditions permitting:

**LM-MGF-CAS-0630 Maldon - Railway Tk fuel reduction burn,** 311.74 hectares, 4km SE of Maldon.

**Map reference:** NW Spatial Vision Map Book: Pg 184 G6 **Grid Reference:** 55H BU 426-995

This burn should be completed between 1000 hrs on Monday 5<sup>th</sup> of May 2025 and 2000 hours on Wednesday 7<sup>th</sup> of May 2025.

You may see smoke from this burn until Monday 12<sup>th</sup> of May 2025. FFMVic Staff will be patrolling this burn until declared safe.



**You may be affected by smoke from these planned burns.**

**Smoke may be visible from:** Castlemaine, Campbells Creek, Chewton, Elphinstone, Fryerstown, Malmsbury, Kyneton, Taradale and surrounding communities

## What to do about:

### SMOKE

- If you are experiencing any symptoms that may be due to smoke exposure, the Department of Health advises that you should seek medical advice or call Nurse on Call on 1300 606 024.
- Close windows and doors to prevent smoke from entering.

### ROADS

- Road travel may be hazardous due to low visibility associated with smoke.
- Signs may be in place to slow traffic. Obey all traffic signs and instructions from fire agency crews near the burn.
- For travel times and roadworks check <http://traffic.vicroads.vic.gov.au>.

### ACCESS TO FOREST/PARK RECREATION SITES

- Be aware of planned burns happening in your local area and stay clear of areas where burns are taking place or areas that have recently been burnt.
- Access to walking tracks, car parks, camping grounds and picnic sites in areas close to or in burn areas may be restricted.

For park closures, please refer to Parks Victoria on 13 1963 or visit [www.parks.vic.gov.au](http://www.parks.vic.gov.au)

### Stay informed about Planned Burning

Visit our website at <http://ffm.vic.gov.au/plannedburn>

Call the **VicEmergency Hotline** on freecall **1800 226 226**

Download the **VicEmergency app**

Sign up for **automated notifications** about planned burns near you at

<https://plannedburns.ffm.vic.gov.au/>

Callers who are deaf, hard of hearing, or have a speech/communication impairment can contact via the National Relay Service on 1800 555 677.

**Authorisation:** Authorised by Forest Fire Management Victoria Regional Burns Coordinator, Ben Matthews 04/05/2025

Yours sincerely,

Ben Matthews

[ffm.vic.gov.au](http://ffm.vic.gov.au)

FOREST FIRE  
MANAGEMENT VICTORIA

#### Privacy Statement

Any personal information about you or a third party in your correspondence will be protected under the provisions of the *Privacy and Data Protection Act 2014*. It will only be used or disclosed to appropriate Ministerial, Statutory Authority, or departmental staff in regard to the purpose for which it was provided, unless required or authorized by law. Enquiries about access to information about you held by the Department should be directed to [foi.unit@delwp.vic.gov.au](mailto:foi.unit@delwp.vic.gov.au) or FOI Unit, Department of Energy, Environment and Climate Action, PO Box 500, East Melbourne, Victoria 8002.